

## ECF 工程執行及驗收報告資料

機構名稱：聖公會聖三一堂中學 SKH Holy Trinity Church Secondary School

項目名稱：綠色校園持續發展計劃 Sustainable Green School Program

項目日期：2013 年 7 月至 2015 年 12 月

計劃編號：MW0846

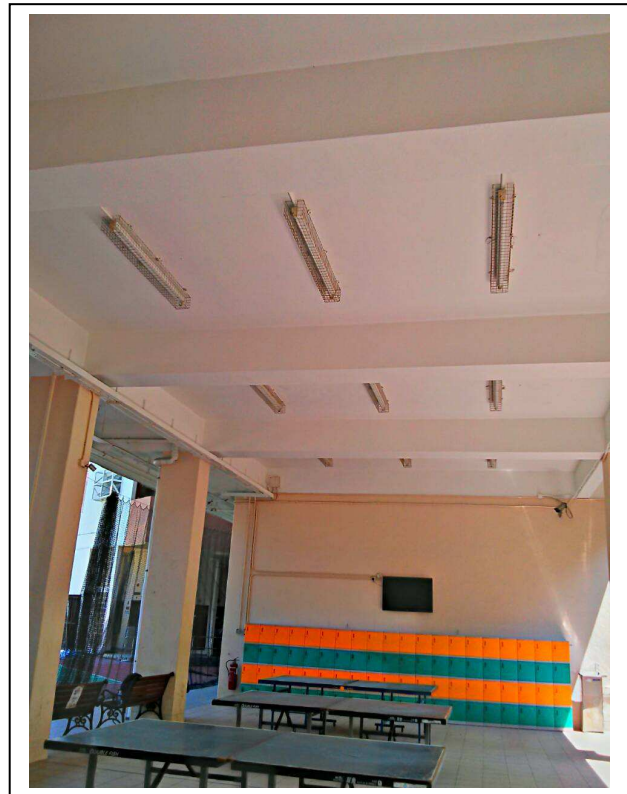
獲批款額：HK\$ 508,750 (後更改為 HK\$ 498,750)

報告日期：2016 年 1 月 28 日

工程項目：

Application Item (1)	<b>T5 Fluorescent Lamp</b>		
Quantity	1x35W : 382 units 2x35W : 182 units 1x28W : 45 units 2x28W : 136 units 3x28W : 24 units 1x14W : 7 units 2x14W : 24 units 3x14W : 3 units Total : <b>803 units</b>  T5 Emergency Lighting 35W : 7 units Total : <b>7 units</b>		
Location	T5 Fluorescent Lamp : Classrooms : G/F - 6/F Rainy Playground, Hall, G/F- 7/F : Corridor, Staff Room, Store Room, Toilet and Stairs  T5 Emergency Lighting : 7/F Front and Back stairs.		
<b>Energy Saving Comparison</b>			
Type of Lighting	Compact Fluorescent Lamp (Original)	T5 Lighting (Replacement)	Benefit
Energy Consumption	24/42/65W	14/28/35W	Annual Energy Saving : <b><u>32,544 KWH</u></b> Saving Rate : <b><u>43.7%</u></b> Annual Carbon Reduction : <b><u>19,201 kg</u></b>
Quantity	810	810	
Annual Operation Hours	1,600	1,600	
Annual Energy Consumption	74,466 KWH	41,922 KWH	

Photo



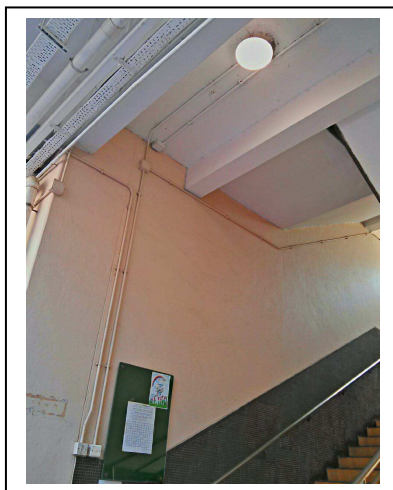
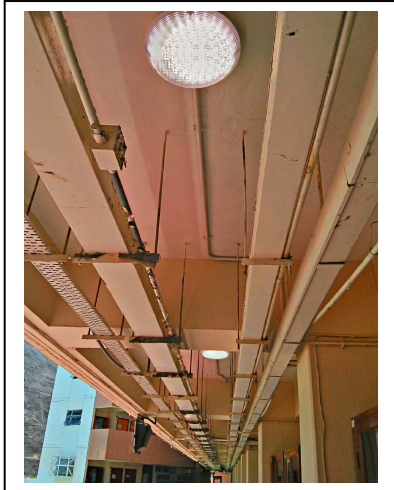
Application Item (2)	<b>LED Ceiling Lighting &amp; Emergency Energy Supply</b>
Quantity	LED Ceiling Lighting : 85 units & Emergency Energy Supply : 32 units
Location	G/F to 7/F Main Corridors & Stairs

**Energy Saving Comparison**

Type of Lighting	Compact Fluorescent Lamp (Original)	LED Lighting (Replacement)	Benefit
Energy Consumption	38w	16w	Annual Energy Saving : <b><u>3,744 KWH</u></b> Saving Rate : <b><u>52.6%</u></b> Annual Carbon Reduction : <b><u>2,209 kg</u></b>
Quantity	117	117	
Annual Operation Hours	1,600	1,600	
Annual Energy Consumption	7,114 KWH	3,370 KWH	

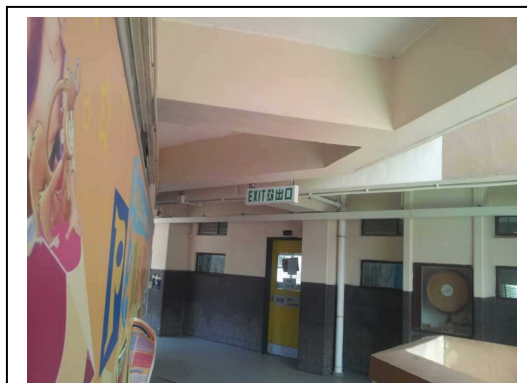
Photo





Application Item (3)	<b>LED Exit Light Box</b>		
Quantity	28 units		
Location	Main Corridors & Stairs		
<b>Energy Saving Comparison</b>			
Type of Lighting	Compact Fluorescent Lamp (Original)	LED Lighting (Replacement)	Benefit
Energy Consumption	0.02 KW	0.0035 KW	Annual Energy Saving : <b><u>4,047 KWH</u></b> Saving Rate : <b><u>83%</u></b> Annual Carbon Reduction : <b><u>2,388 kg</u></b>
Quantity	28	28	
Annual Operation Hours	8,760	8,760	
Annual Energy Consumption	4,906 KWH	859 KWH	

Photo





Application Item (4)	<b>Solar Insulation Roof Coating</b>
Quantity	344 square Meters
Location	Roof of Hall

**Energy Saving Comparison (Air-Conditioner) :**

Annual Energy Saving : **5,037 KWH** ; Saving Rate : **18%** ; Annual Carbon Reduction : **2,972 kg**

**Photo**



Application Item (5)	<b>Food Waste Decomposer</b>
Quantity	1 unit
Location	Ground Floor Rainy Playground
Installation	<ol style="list-style-type: none"> <li>1. Machine properly installed;</li> <li>2. The Compost materials : Sawdust, Enzymes and Sugar has been put in the machine;</li> <li>3. Food Waste put into the machine to kick off the Food Waste Decomposing process.</li> </ol>

**Photo**



Application Item (6)	<b>Wind &amp; Solar LED Road Lighting</b>
Quantity	2 unit
Location	校內接待處右則及左則水池最終處位置
Benefit	再生能源為人類未來最有希望的潔淨能源，為提高學生對風力發電及太陽能的認識，現申請於校內安裝風能及太陽能互補路燈，令校內師生可更多時間接觸到再生能源，從而提高師生的環保認識。

Photo

